



GEO-ENGINEERING EXTREME EVENTS RECONNAISSANCE

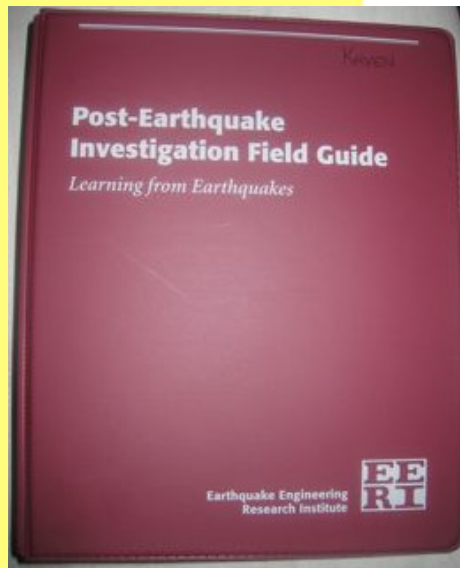
Turning Disaster into Knowledge

GEER Post-Event Reconnaissance Guidance Document **Robert Kayen – US Geological Survey**

- Guide GEER team as they survey the damaging geotechnical aspects
- Standardize digital documentation
- Provide a solid foundation of information for further research.



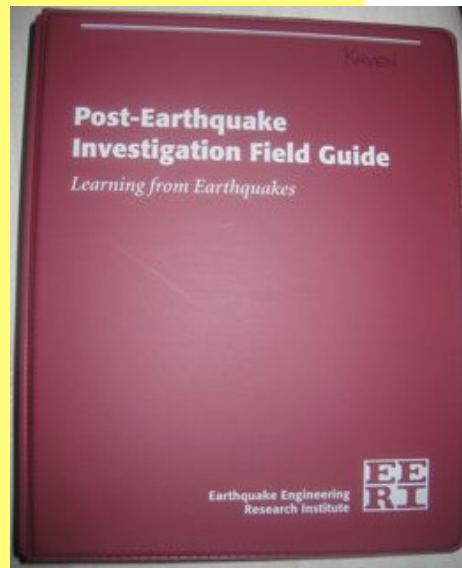
GEER Post-Event Reconnaissance Guidance Document



- EERI 'Post-Earthquake Investigation Field Guide *Learning from Earthquakes*'
- Amplify Geo-Engineering Elements
- Update, Promote, and Standardize Guidance for Internet/Digital Globe Driven Reconnaissance Effort



GEER Post-Event Reconnaissance Guidance Document



- Germane elements of EERI 'Post-Earthquake Investigation Field Guide *Learning from Earthquakes*'; S3-General Response Procedures; S4-Responsibilities of Project Participants
- **New Elements- [1] Team Meetings,[2] Team Safety, [3] Mobile Communications, [4] GPS, [5] Geodetic Datum's, [6] Digital Reconnaissance, [7] Google Earth Reconnaissance and GE Reporting**



Post-Event Reconnaissance Guidance Document: MEETINGS



Morning Planning
Meeting on the road



Evening Clearinghouse
Team Discussion using
Google Earth

- TEAM Meetings – Focused on maximizing recon productivity & efficiency
- Identify & assist topic-leaders who synthesize team observations
- Promote a ‘culture of safety’
- Discuss daily observations; Organize digital data, photos, GPS. Generate daily Google Earth map and disseminate map onto everyone’s laptop.



Post-Event Reconnaissance Guidance Document: SAFETY

THE AMERICAN RED CROSS FIRST AID & SAFETY HANDBOOK



American Red Cross
and Kathleen A. Handal, M.D.
Foreword by Elizabeth Dole



- GEER teams arrive within 72 hour
- Promote a ***Culture of Safety*** among team
- Require First Aid bags and Manuals; Mobile Phones; Supply of water and high-energy foods in every vehicle.
- Guidance on appropriate clothing & personal gear
- Be aware of surroundings & potential crime, driving hazards, walking on landslides, bear hazards, etc.



Post-Event Reconnaissance Guidance Document: COMMUNICATIONS



Phone, Skype,
Dictation, email, web,
SMS, GPS, Camera,
Google Earth, Twitter
...everything!



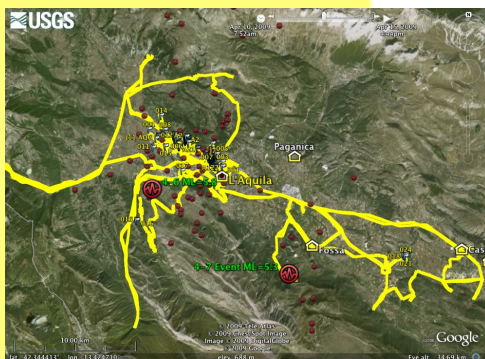
- Bad: Show up with no means of communication (typical on Int'l events)
- Good: Voice and texting
- Best: Smart Phones with voice, web, email, texting, camera, GPS
(iphone, Palm & Int'l voice-data plan)
- 'Walkie Talkies', SMS Texting, Twitter



Post-Event Reconnaissance Guidance Document: GPS



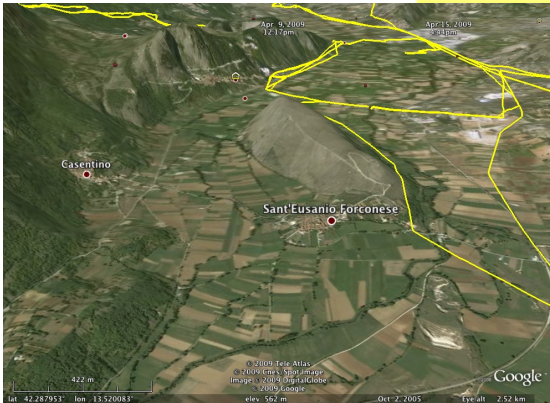
Logging Waypoints
[Castelnuovo, IT]



.gpx file Track Log and
Waypoints brought
into Google Earth
[Abruzzo, IT]

- Standardizing on Garmin unit
- Always recording 'Track logs'
- Always turning on WAAS
- How to take and report 'waypoints'
- Sequential site naming with ID
- Geotagging photographs
- .gpx files

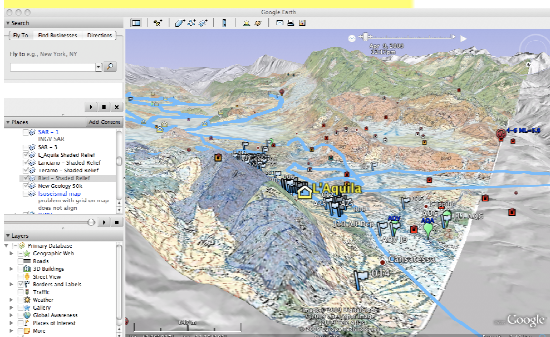
Post-Event Reconnaissance Guidance Document: GOOGLE EARTH (GE)



Mapping on Satellite imagery



Mapping on Geology Overlay



Field Mapping on daily .kmz file

- It is Free, Everywhere, and Easy
- How to map using Google Earth
- Importing GPS .gpx data and KML processed GPS data
- Importing overlay images (e.g. aftershocks locations, Geologic Map)
- Making daily .kmz file & disseminate
- Data structure
- Final reporting map



Post-Event Reconnaissance Guidance Document: GOOGLE EARTH (GE)

- **Appendix 1: AMERICAN RED CROSS FIRST AID ESSENTIALS**
- **Appendix 2: EXCEL templates for logging observations**
- **Appendix 3: Google Earth KML Tutorial**



GEO-ENGINEERING EXTREME EVENTS RECONNAISSANCE

Turning Disaster into Knowledge

GEER Post-Event Reconnaissance Guidance Document **Robert Kayen – US Geological Survey**

- Guide GEER team as they survey the damaging geotechnical aspects
- Standardize digital documentation
- Provide a solid foundation of information for further research.